

PARK VUE



13 AFFORDABLE TOWNHOMES IN THE ROCKDALE NEIGHBORHOOD

\$382,320

NEW CONSTRUCTION TOWNHOME
COMMUNITY

STEPS FROM NEW 280-ACRE WESTSIDE
PARK

OPEN CONCEPT FLOORPLANS WITH 1,362
SF OF FINISHED SPACE

3 BEDROOMS AND 2.5 BATHS

GATED COMMUNITY WITH POOL

To ensure long-term affordability near the Westside Park, Atlanta Land Trust is offering these homes through the community land trust model.

Visit atlantalandtrust.org for an overview of how CLTs work then register for our next community information session to start the homebuying process.



STEWARDS OF PERMANENTLY AFFORDABLE HOUSING

*Sign up
today!*



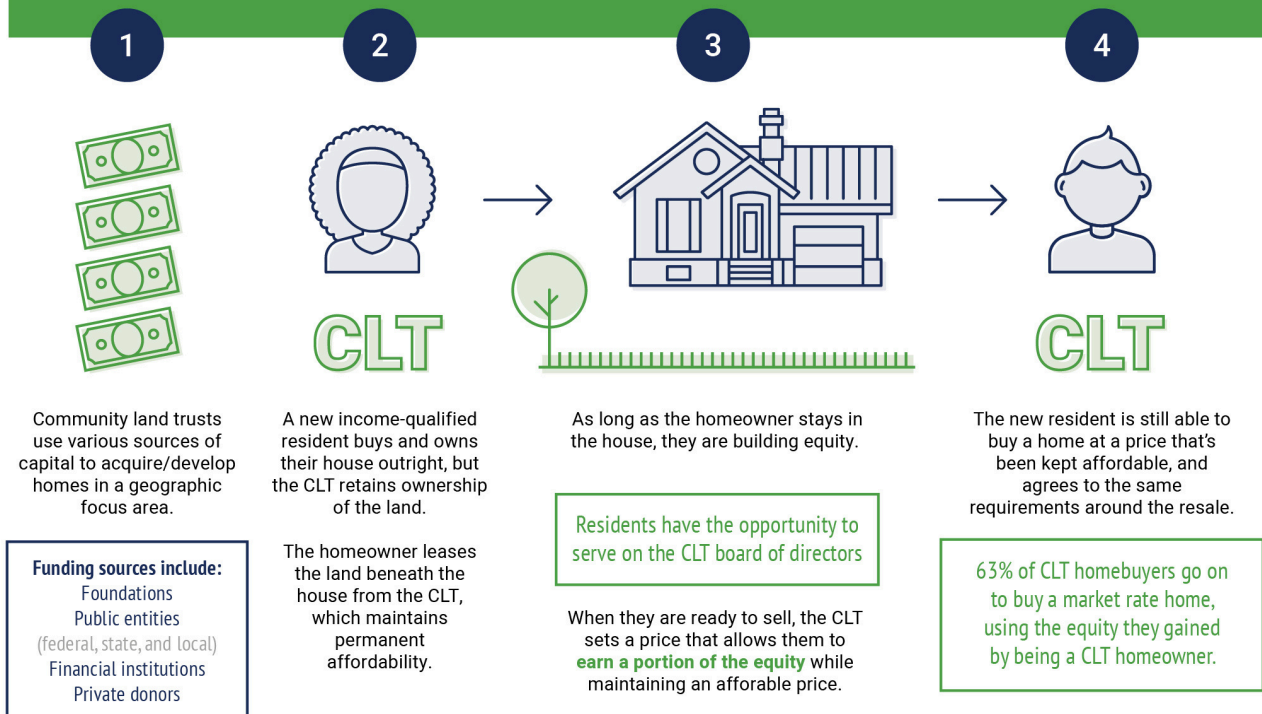
[ATLANTALANDTRUST.ORG](https://atlantalandtrust.org)

CAN'T FIND AN AFFORDABLE HOME TO BUY?

Limited housing supply and a very competitive housing market are squeezing low-income families out of homeownership. Neighborhoods once considered affordable have fewer and fewer affordable options. Here's a unique homeownership opportunity for moderate-income homebuyers. These homes are available to homebuyers with incomes below 120% of the area median income (AMI):

FAMILY SIZE	120% AMI
1 Person	\$85,800
2 People	\$98,025
3 People	\$110,250
4 People	\$122,475

How does a Community Land Trust work?



©2021 Atlanta Land Trust