

1002 SMITH STREET SW ATLANTA, GA 30310



\$200,000

NEWLY RENOVATED 1-STORY HOUSE

1,200 SQUARE FEET FEATURING A FRONT PORCH

3 BEDROOMS AND 2 BATHROOMS

STEPS FROM PITTMAN PARK

LESS THAN A HALF MILE FROM THE SOUTHSIDE BELTLINE TRAIL

To ensure long-term affordability in the historic Pittsburgh neighborhood, we are offering this home through the community land trust model.

Visit atlantalandtrust.org for an overview of how community land trusts work and sign up to attend an upcoming Community Information Session.



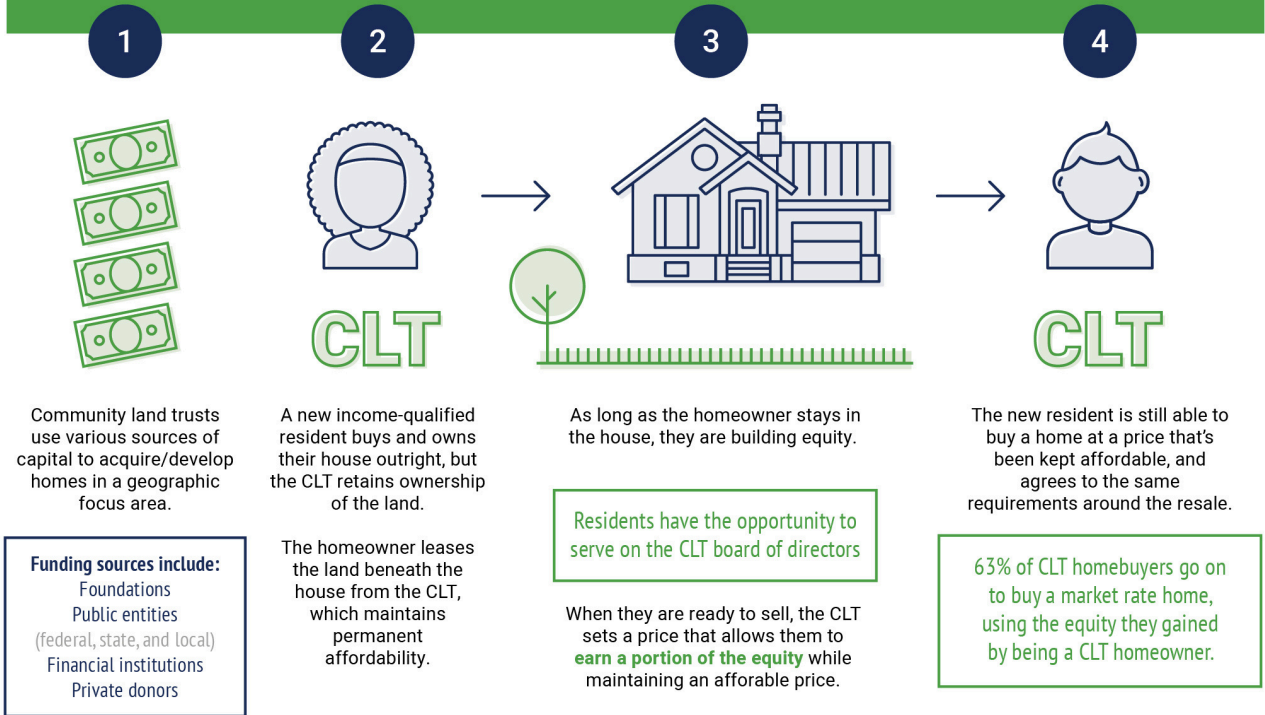
ATLANTALANDTRUST.ORG

CAN'T FIND AN AFFORDABLE HOME TO BUY?

Limited housing supply and a very competitive housing market are squeezing low-income families out of homeownership. Neighborhoods once considered affordable have fewer and fewer affordable options. Here's a unique homeownership opportunity for low-income homebuyers ONLY – specifically, those at or below **65%** of area median household income.

FAMILY SIZE	INCOME
1 Person	\$46,475
2 People	\$53,105
3 People	\$59,735
4 People	\$66,265

How does a Community Land Trust work?



©2021 Atlanta Land Trust