

1255 EPWORTH STREET SW ATLANTA, GA 30310



\$207,000

**NEWLY RENOVATED 1-STORY HOUSE ON A
0.22 ACRE LOT**

**1080 SF FEATURING A FRONT PORCH AND
BACK DECK**

3 BEDROOMS AND 2 BATHS

**STEPS FROM THE REV. JAMES ORANGE
PARK**

**LESS THAN A MILE FROM THE OAKLAND
CITY MARTA STATION AND BELTLINE
WESTSIDE TRAIL**

To ensure long-term affordability in the historic Oakland City neighborhood, we are offering this home through the community land trust model.

Visit atlantalandtrust.org for an overview of how community land trusts work and sign up to attend an upcoming Community Information Session.

CAN'T FIND AN AFFORDABLE HOME TO BUY?

Limited housing supply and a very competitive housing market are squeezing low-income families out of homeownership. Neighborhoods once considered affordable have fewer and fewer affordable options. Here's a unique homeownership opportunity for low-income homebuyers **ONLY** – specifically, those at or below **65%** of area median household income.

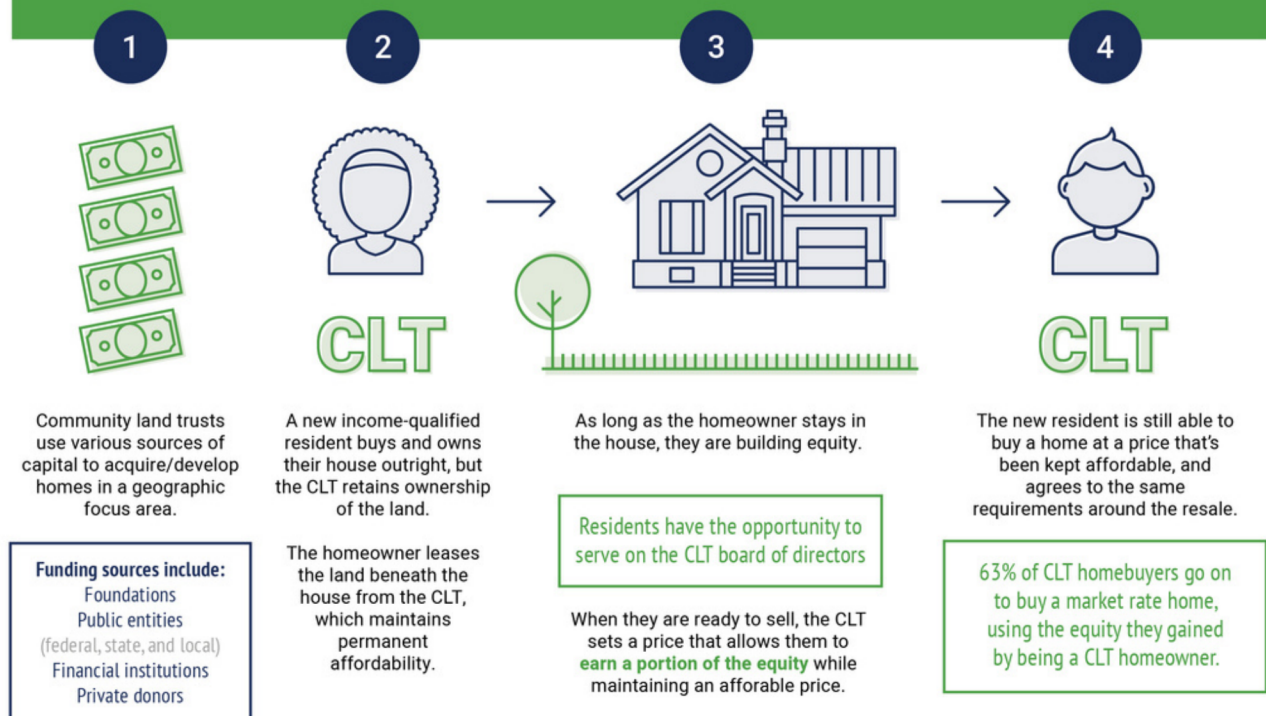
FAMILY SIZE

1 Person
2 People
3 People
4 People

INCOME

\$46,475
\$53,105
\$59,735
\$66,265

How does a Community Land Trust work?



©2021 Atlanta Land Trust

ATLANTALANDTRUST.ORG