

1125 Cordova St SW Atlanta GA, 30310



\$199,000

1000 SF NEWLY RENOVATED HISTORIC HOME

- 2 BEDROOMS
- 2 BATHROOMS
- FRONT PORCH
- OFF STREET PARKING
- LARGE LIVING ROOM, BEDROOMS, AND CLOSETS

LOCATION PERKS:

- WALKING DISTANCE TO THE WESTSIDE BELTLINE AND LEE + WHITE RESTUARANT AND RETAIL DISTRICT
- MINUTES FROM REV. JAMES ORANGE PARK AND WEST ATLANTA WATERSHED ALLIANCE OUTDOOR ACTIVITY CENTER
- 2 MILES TO DOWNTOWN ATLANTA

To ensure long-term affordability in the Oakland City neighborhood, we are offering this home through the community land trust model.

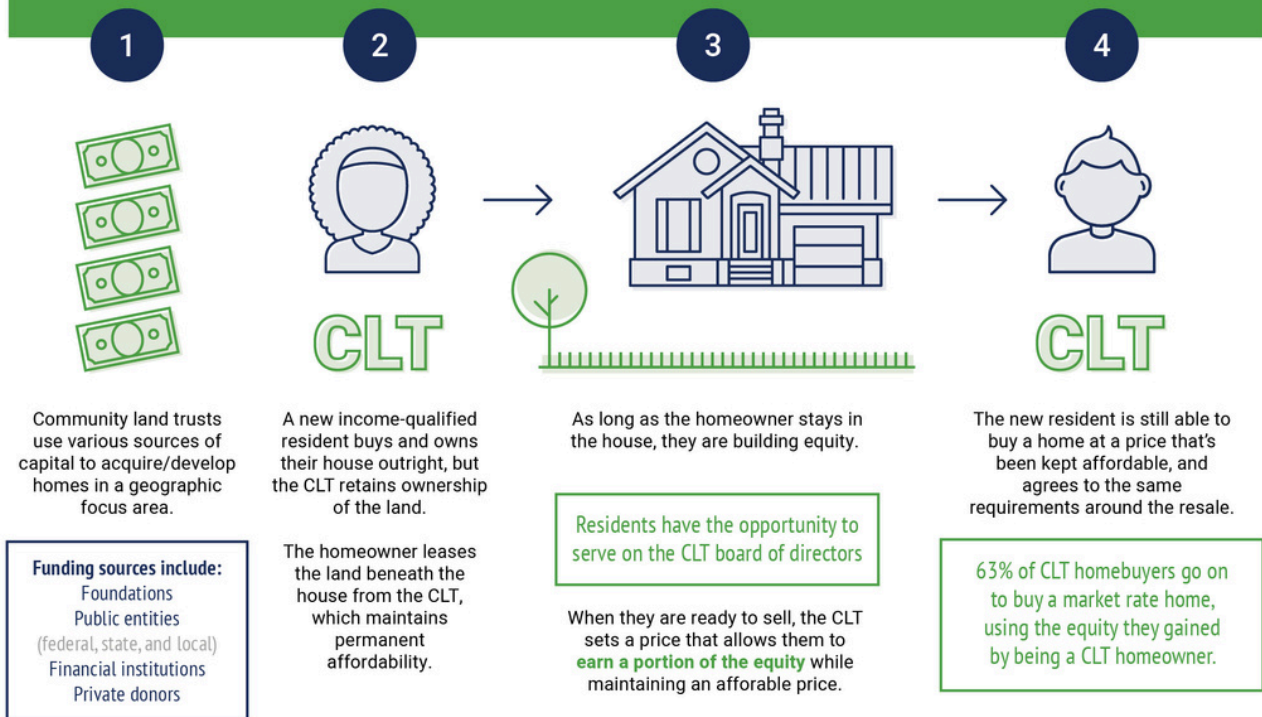
Visit atlantalandtrust.org for an overview of how community land trusts work and sign up to attend an upcoming Community Information Session.

CAN'T FIND AN AFFORDABLE HOME TO BUY?

Limited housing supply and a very competitive housing market are squeezing low-income families out of homeownership. Neighborhoods once considered affordable have fewer and fewer affordable options. Here's a unique homeownership opportunity for low-income homebuyers ONLY – specifically, those **at or below 65% of area median household income.**

FAMILY SIZE	INCOME
1 Person	\$52,000
2 People	\$59,410
3 People	\$66,820
4 People	\$74,230

How does a Community Land Trust work?



©2021 Atlanta Land Trust